



# SUNVIEW

by LINDSAY WINDOWS



your lifetime.

HEALTHY ENDURANCE.





## Quality windows to fit your budget.



Making an investment in your home and its value is a smart decision. Determining the right products and enhancements is not always easy nor is fitting them into the budget. When it comes to choosing windows, you want the most attractive, strong and energy-efficient window available. SunView Windows bring you the durability and cost savings you need while keeping you safe and comfortable for years to come.

# Distinctive Design

SunView Windows are engineered to combine style, economy and design flexibility with energy performance and security. The SunView Window is an economical choice in the window market that doesn't sacrifice energy performance or quality.

## FEATURES THAT MAKE A DIFFERENCE

- ▶ Comfort through energy efficient glass and window design
- ▶ Reduced outside noise from multiple frame chambers, weatherstrip, insulated glass and warm edge spacer
- ▶ Strength and durability from fusion welded frame and sash
- ▶ Easy clean sashes that tilt-in on double hung windows (bottom only on single hung windows)
- ▶ Great water run-off and quick cleaning with sloped sill
- ▶ Smooth operation from OpenEZ high-quality balances
- ▶ UV ray reduction and improved energy efficiency from Low-E glass (Use of Low-E glass can help protect your home furnishings from fading) Reduced heating and air conditioning costs
- ▶ Condensation reduction from warm edge spacer
- ▶ Peace of mind with warranty backed from a window company in business since 1947
- ▶ Optional glass packages provide additional energy saving benefits
- ▶ Optional sash vents limit travel of top and bottom sash
- ▶ Extruded Nail Fin, Brick Mould, and 3.5" Trim are some options
- ▶ Built in J Channel, Jamb Extensions, and Casing available
- ▶ Optional screen mesh and FlexScreen
- ▶ Optional (WOCD) Window Operating Control Device

## ATTRACTIVE

- ▶ Beveled sash provides great look and sleek feel, maximizes visible glass
- ▶ Smooth, maintenance-free interior and exterior surfaces
- ▶ Rounded tilt-latches for contoured look
- ▶ Contoured locks provide smooth look and tight fit
- ▶ Mitered screen corners with no exposed corner pieces
- ▶ Extruded, curved lift rails look great instead of a flat bulky look



Double Hung Window

Two Locks for Windows 24" or Wider



Tilts in for Easy Cleaning



Optional Sash Vents



Spring-Loaded Code Compliant WOCD Option



Non-Metal Interlock Reinforcement

# Performance

## PRO ENTECH INSULATING GLASS

EnTech insulating glass units deliver the ideal energy balance of solar heat control, high visibility and fade protection. With gas filled chambers and Low-E coatings, our windows provide high levels of year-round comfort and energy savings.

	Glass Package	Pieces of Glass	Silver Layers	Gas Filler	Neat® Glass	Northern Region ENERGY STAR®	U-Value	SHGC	VT
STANDARD	<b>EnTech</b> EnTech is a dual-glazed, soft coat Low-E glass unit.	2	2	Argon	No	Exceeds	.27	.27	.46
OPTIONAL	<b>EnTech Pro</b> EnTech Pro is a dual-glazed, soft coat Low-E glass unit.	2	3	Argon	Yes	Exceeds	.27	.20	.48
OPTIONAL	<b>EnTech Peak</b> EnTech Peak is a top-of-the-line insulating glass unit. Not available in single hung or single slider.	3	5	Argon (standard) Krypton (optional)	Yes	Exceeds	.18	.18	.34

### Plus (EnTech+, EnTech Pro+ and EnTech Peak+)

Add the plus feature to any of the above glass packages to obtain additional Low-E coating on the interior. The interior piece of glass is a hard coat Low-E. This option improves the EnTech or EnTech Pro u-value between .03 and .05.

Performance numbers shown for dual glazed windows (EnTech Peak is triple-glazed) without grids. Manufacturer reserves the right to modify materials that impact ratings. ENERGY STAR criteria is based on the rigorous Northern climate zone.

\*Neat® is an invisible, durable and permanent coating that helps your windows stay clean longer. It uses the sun's UV rays to loosen dirt so water can rinse it away

\*\* Meets Northern Energy Star Standard with different option in windows. Please contact for more information.

\*\*\*Results listed are for the North-Central, South-Central, and Southern regions for Energy Star. The Northern Region implements new standards. Check with your dealer for further information.

## WARM EDGE TECHNOLOGY

SunView's technology incorporates a warm edge product that reduces condensation, frosting and mold growth while providing superior energy performance. The spacer technology and insulated glass processes have been tested to meet the rigid ASTM 2190 certification. This certification tests for durability, longevity and argon retention.



Lock

## SECURE HARDWARE

SunView's TruSecure Hardware combines streamlined lock visuals with a slimline tilt latch, to achieve a cleaner high-end appearance and true market distinction. It also allows the sash to easily tilt in for cleaning. The locks on SunView windows have been tested to be 25% stronger than a comparable zinc lock. Our FER Lock meets force entry lock standards.



Tilt Latch

## MORE PERFORMANCE FEATURES



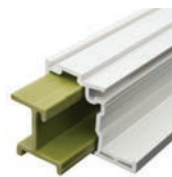
### Mold Resistant Weatherstrip

The average SunView double hung window has over 25 feet of fin seal weatherstrip. It helps reduce outside noise and infiltration of exterior gases such as carbon monoxide.



### Interlock

The non-metallic reinforced interlock on the SunView double hung window is designed to significantly reduce air infiltration. It also helps as a security barrier for your home. The reinforcement provides strength for long-term satisfaction of your windows.



### ThermoStrong Reinforcement

This advanced fiber glass resin insert provides superior strength and thermal performance. ThermoStrong non-metal reinforcement provides up to 700 times the thermal performance over metal reinforcements.



# Window Styles

SunView Windows are available in many styles to suit your home and budget.

## CROWNVIEW WINDOW OFFERINGS INCLUDE:

Double Hung and Single Hung Windows | Casement and Awning Windows | Picture Windows  
Double Slider | Single Slider | 3-Lite Slider | Bay Windows | Bow Windows | Patio Doors - 2, 3 and 4 Lite | Geometric and Specialty  
Windows | Basement Hopper Windows | Revolution Tilt-n-Turn Windows | Garden Windows



**DOUBLE HUNG WINDOWS**



**BAY WINDOWS**



**CASEMENT & PICTURE WINDOWS**



**BOW WINDOWS**



**SLIDER WINDOWS** (3-Lite 1/4, 1/2, 1/4 shown)

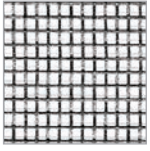


**PATIO DOORS**

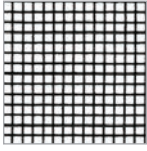
# SCREENS

## CHOOSE FROM THESE SCREENS

CrownView Windows are standard with a fiberglass half screen. Full screens are available as an upgrade on double hung and slider windows. Upgrade your screen mesh to Clear View Screen Mesh, Pet Screen or Charcoal Aluminum.



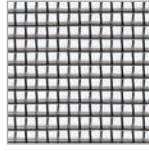
STANDARD FIBERGLASS



CLEAR VIEW FIBERGLASS



PET SCREEN



CHARCOAL ALUMINUM

### Clear View Screen Advantages:

- ▶ Allows more light through than the standard screen mesh
- ▶ Uses a finer gauge of fiberglass strand than the standard screen mesh
- ▶ Clear View Screen Mesh has more strands providing a tighter weave that keeps the bugs out
- ▶ Optional for all windows that use a screen

## OR TRY THIS OPTIONAL REVOLUTIONARY SCREEN FROM FLEXSCREEN

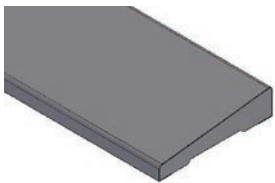
### FlexScreen Advantages:

- ▶ Simple design uses a PVC coated, high-performance spring steel frame
- ▶ FlexScreen is damage resistant. No more bent aluminum frames, scratched paint and broken hardware
- ▶ Effortless installation
- ▶ FlexScreen's frame is not visible. It hides in the window screen pocket, improving sight lines and eliminating the need for color matching
- ▶ Lifetime warranty directly from FlexScreen
- ▶ Available in Standard and Clear View Mesh.
- ▶ Optional for all windows

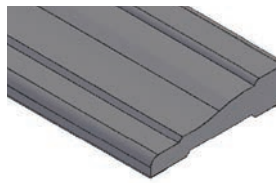


# INTERIOR OPTIONS

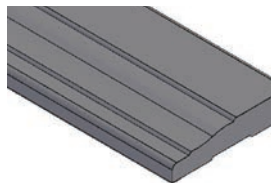
## EXTENSION JAMB AND WINDOW CASING



2-1/4" RANCH STYLE



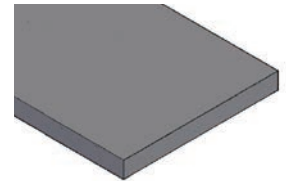
2-1/4" COLONIAL STYLE



3-1/4" COLONIAL STYLE



1/2" x 3/4" BASE SHOE TRIM



EXTENSION JAMB

### EXTENSION JAMB COLORS (Wood Composite Base)

\*Solid white vinyl jamb available as an option.



WHITE\* CLAY SANDSTONE LIGHT OAK DARK OAK CHERRY MAPLE WALNUT OAK VENEER PINE PRIMED PINE

### BASE SHOE/CASING COLORS (Wood Composite Base)



WHITE CLAY SANDSTONE LIGHT OAK DARK OAK CHERRY MAPLE WALNUT

Actual colors may vary. White can be wood based laminate or solid vinyl.

## 25 YEAR LIMITED WARRANTY

Lindsay Windows has a leading industry warranty that will provide you with high value and peace of mind. The basic window unit has a 25 year warranty that covers everything including hardware, etc. from any defect under normal use. The glass package has a 25 year warranty against seal failure and a one year warranty on stress cracks. See warranty information for details and specific limitations.

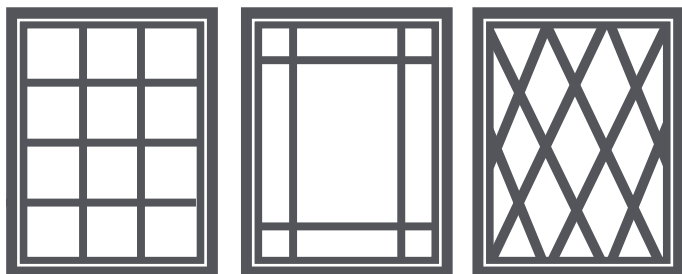


# DESIGN & COLOR OPTIONS

## GRID PATTERNS AND TYPES

Enhance the look of your home with distinctive grid styles. All grids are between the glass—making cleaning easy. Simply choose a grid pattern and type below to accent your new windows or design your own grid pattern. SDLs applied on the exteriors of the inner and exterior glass.

### GRID PATTERNS



COLONIAL

PRAIRIE

DIAMOND

The number of grids used in the colonial (standard) and diamond patterns vary depending on window size.

### GRID TYPES



FLAT

SCULPTURED

SIMULATED DIVIDED LITE  
(outside of glass in and out)

## CASEMENT BLINDS AND FIXED WINDOWS with Low E Glass

Blinds TILT, RAISE & LOWER in a sealed IG unit.



WHITE

SANDSTONE

CLAY

SILVER  
MOON

SLATE  
GREY

ESPRESSO

## OBSCURE GLASS

Obscure glass is commonly used in bathrooms to distort the image behind the glass. Choose from these options.



NORMAL VIEW

STANDARD  
OBSCURE

AQUA

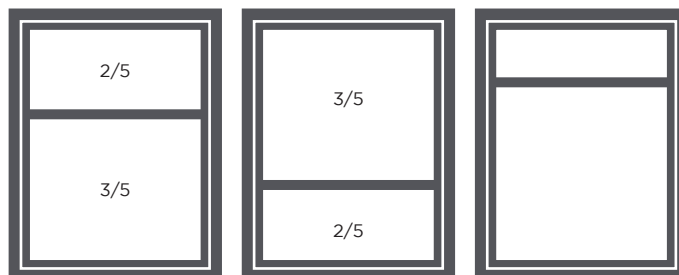
RAIN

### TEMPERED GLASS

Often required in bathrooms, stairways and windows close to the floor or a doorway, tempered glass is similar to a car windshield so it will not shatter if broken. Check your local building code for any windows requiring tempered glass.

## DOUBLE HUNG AND SINGLE HUNG MEETING RAIL OPTIONS

You have the option to change the height of your single hung or double hung meeting rail. A custom meeting rail is available by measuring from the bottom sill of the window to the top of the meeting rail.



COTTAGE

ORIEL

CUSTOM

## COLOR CHOICES

Many color and laminate combinations are available. Choose from same exterior and interior solid vinyl colors, interior laminate woodgrains, interior and exterior solid color laminations, or exterior and interior paint coatings. Warranty covers both exterior and interior laminates and paints. See warranty for details. Actual colors may vary from those shown.

### EXTERIOR/INTERIOR VINYL COLORS



WHITE

SANDSTONE

CLAY

Custom color matching and custom laminate colors are available for larger jobs.

### INTERIOR LAMINATE WOODGRAINS



GOLDEN  
MAPLE

LIGHT

DARK

CHERRY

WALNUT

Jamb and casing available in same colors as windows including woodgrains. Woodgrain laminates are available only on white base for 3100 and 3300.

### EXTERIOR/INTERIOR LAMINATES



BLACK

BRONZE

\*ANTHRACITE  
GRAY

\*SILVER  
METALLIC

\* Minimum of 100 Windows for gray and silver laminates

### EXTERIOR/INTERIOR PAINT COATINGS



CREAM  
WHITE

PARCHMENT

BUTTER-  
CREAM

LINDSAY  
SANDSTONE

CLAY 145

TERRATONE

LINDSAY  
EARTHTONE



LINDSAY  
GREEN

BRICK  
RED

ROYAL  
BROWN

MOUNTAIN  
RIDGE

LINDSAY  
BRONZE

STORM  
GRAY

MIDNIGHT  
BLACK

Actual colors may vary from those shown. Many color samples are available upon request.



Contact your local dealer or Lindsay Windows for more information.

North Mankato, Minnesota  
(507) 625-4278

Union, Missouri  
(636) 583-0850

Aurora, Illinois  
(630) 892-5091

Other Manufacturing Facilities  
Georgia, Washington,  
California, Texas

*We Enthusiastically Look  
Forward To Your Order!*



[www.LindsayWindows.com](http://www.LindsayWindows.com)



## PROVEN QUALITY



### ENERGY STAR® APPROVED

SunView Windows are designed to reduce energy consumption and meet the rigorous standards set by ENERGY STAR. SunView Windows have options that can even meet the more difficult standards. Since 1947 we have worked hard to design and manufacture energy efficient windows for your home.



### MADE IN USA CERTIFIED

SunView Windows are not only manufactured and assembled in the USA, but incorporate a significant percentage of materials from suppliers in the United States. While Made in USA certification calls for 75% of the value of the window to be made and produced in the United States, our goal is to exceed 95%. Primary materials produced in the United States are window extrusions, glass, weatherstrip, screen mesh, reinforcement and glass spacer. We have switched our screen mesh supplier because they moved their manufacturing facility outside of the United States. We take pride in the quality materials we purchase to build windows for your home.



At Lindsay Windows, we are committed to being environmentally engaged and responsible. Throughout the vinyl window manufacturing process—as well as how we go about our daily business—we are continually working to protect you and the environment. Our vinyl windows do not require the elimination of trees, harmful paints or stains and have an environmentally-friendly, extended life cycle which means lower consumption and less waste. Their high performance reduces the energy used in homes and their components are recyclable. At our corporate and manufacturing facilities, Lindsay Windows promotes a culture that embraces energy-saving technologies, recycling and environmental awareness as a part of everyone's responsibility of helping to preserve our world. Our commitment to reducing waste and improving recycling earned us the Minnesota Waste Wise Leader Award.

Lindsay Dealer: